

T18: Using the Internal GPS in SurvCE

Date: May 23, 2018

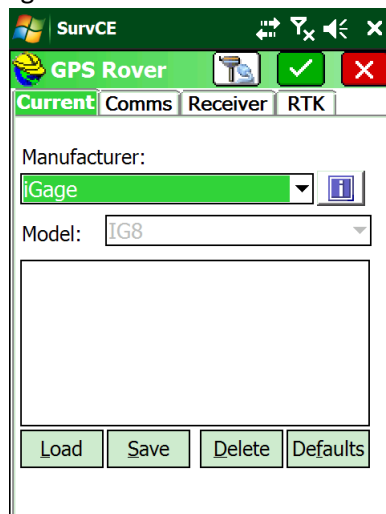
By: Mark Silver, ms@igage.com, +1-801-412-0011 x16

Overview:

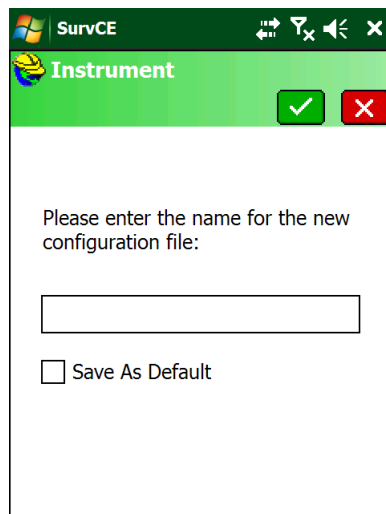
On the T18, the Internal GPS COM port is COM3 at 9600 baud.

Save Current GPS Rover Configuration

1. Your data collector is probably configured correctly for use with an RTK receiver. First save that configuration. From the main SurvCE menu select: Equip: GPS Rover:



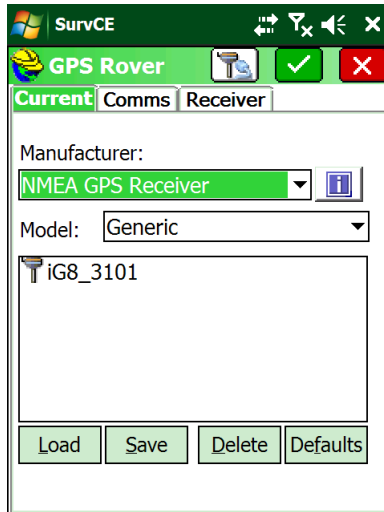
2. Click the 'Save' button on the bottom:



Enter a meaningful name, like 'iG8_3101', then click the green check mark. All your settings are saved!

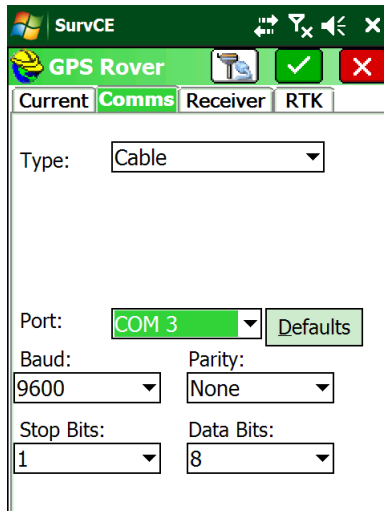
Configure for Internal GPS Receiver

1. In 'Equip: GPS Rover' change the Manufacturer to 'NMEA GPS Receiver' and choose the Generic model:



2

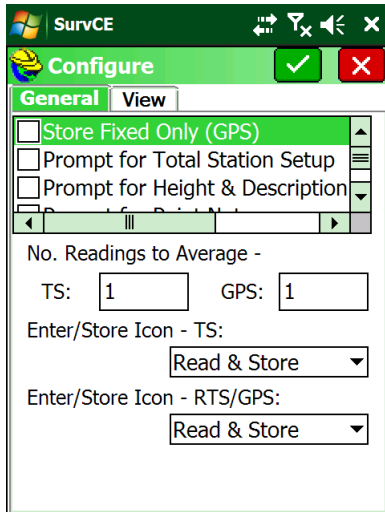
2. Now select the 'Comms' tab:



Set the Type to Cable, the Port to 3 and the Baud to 9600.

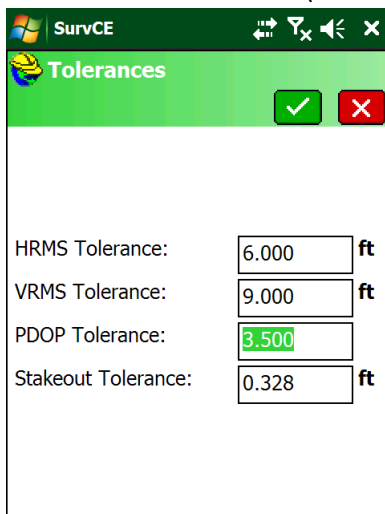
3. Click the green check mark to return to the main menu.

- Click on the 'Configure' button (on the Equip tab):



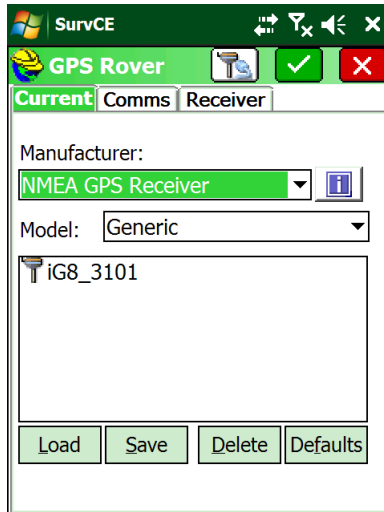
Uncheck the 'Store Fixed Only (GPS)' checkbox. Then click the green check mark to return to the main menu.

- Click the 'Tolerances' button (on the Equip tab):

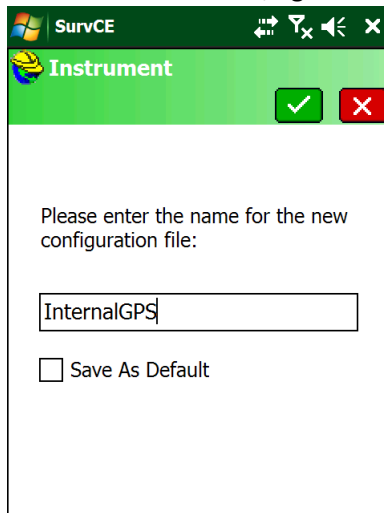


Set the HRMS and VRMS Tolerance to something reasonable for a non-RTK receiver (like shown above). Then click the green check mark to return to the main menu.

- Click on the 'GPS Rover' button again:



- Click on the 'Save' button, again:



Enter a reasonable name for the configuration (like shown above), then click the green check mark.

- Click the green check mark again to return to the main menu.
- The internal receiver will be selected and in use.
- When you want to return to the previous RTK configuration, all you need to do is go to 'Equip: GPS Rover' and click on the desired configuration, then click on 'Load'.