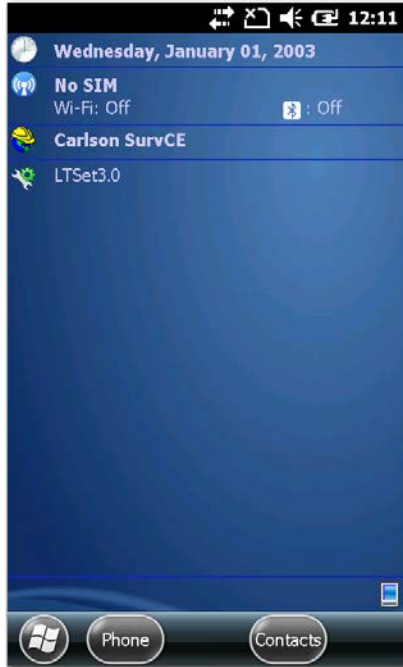


Activating Carlson SurvCE in a LT500T:



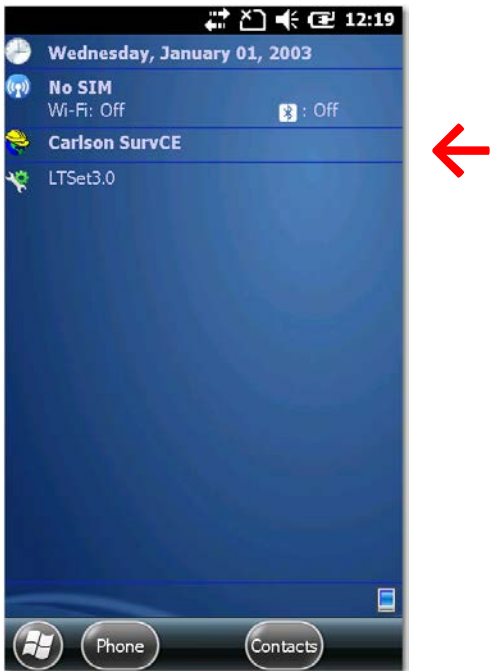
1. Make sure that the 'phone' option is 'On'. To verify click on the connection symbol



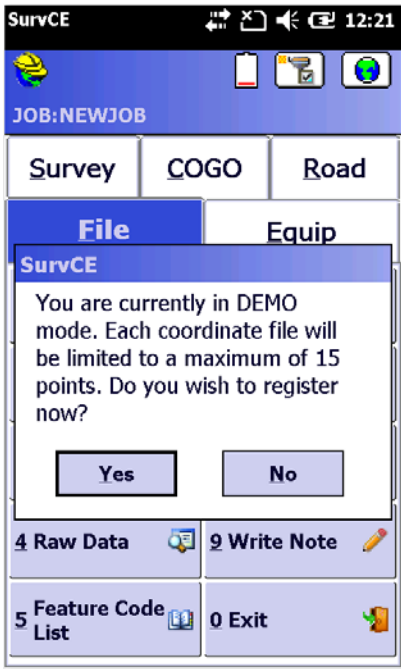
And verify that the Phone option is 'on', if it is 'off' click on it to change:



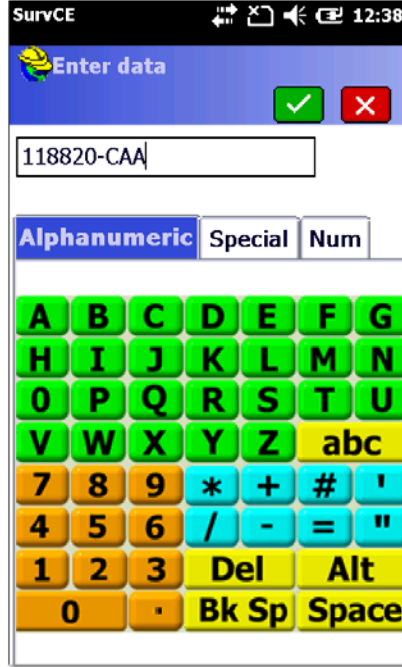
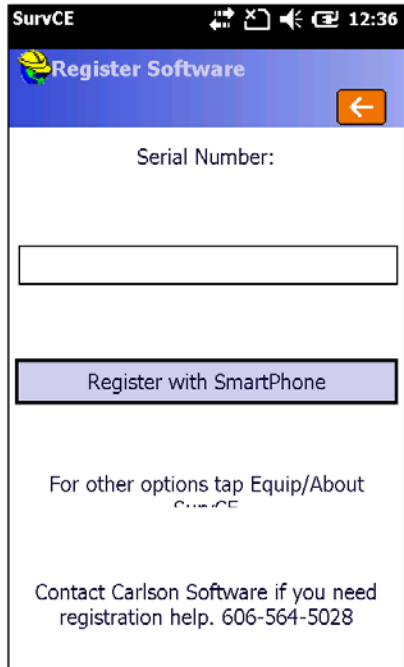
- Now tap on the Carlson SurvCE link:



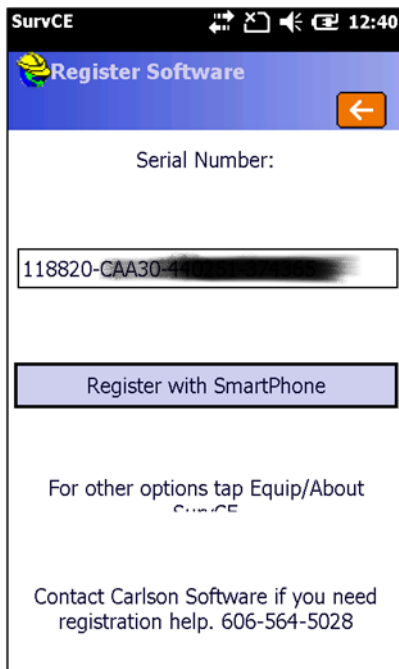
- Click on 'Yes'



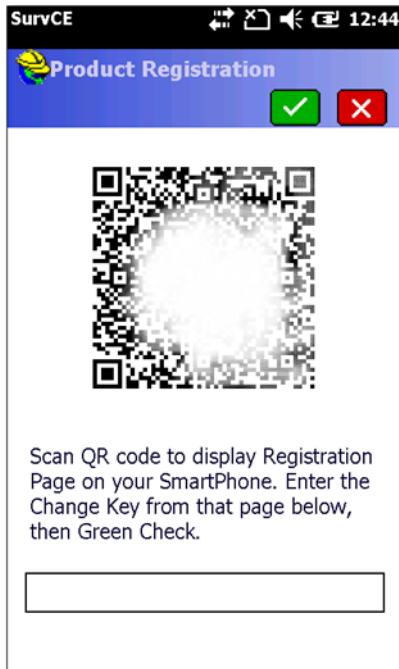
4. Enter your SurvCE SN by tapping on the empty box and entering your SN and clicking the green check mark:



5. Click on 'Register with Smartphone':



6. You will now need to scan the QR code with your Smartphone, using a QR reader app (there are many free 'QR Reader apps in in the PlayStore):



7. Scanning the QR Code on your phone will take you to a registration page on your phone where you will need to enter your contact information and agree to the terms. Then you will get a 'Change Key' that you can enter in the box below the QR code on the LT500T. Then click the Green Check mark.
8. You should get a 'Registration Successful' screen. You are good to go.