



# iG10

## Firmware Update

# iG10 Web Interface

The iG10 web interface allows detailed configuration of the receiver.

The iG10 receiver has an internal Wi-Fi Access Point which can be used in conjunction with a PC or smartphone to configure and control every feature of the receiver including firmware updates.

This manual section describes how to connect to the head by Wi-Fi, the screens match desktop browsers. A mobile (cell phone) browser may be different.

## Connecting a computer

Connect a computer to the iG10 receiver using Wi-Fi.

Device Wi-Fi overview:

SSID: iG10xxxxxxxxxxx  
Sxxxxxxxxxxx

iG10 followed by the serial number, or S followed by the device-serial-number  
no password is needed, connection is

Wi-Fi Key: (open)

open

address: 192.168.10.1

port: 80

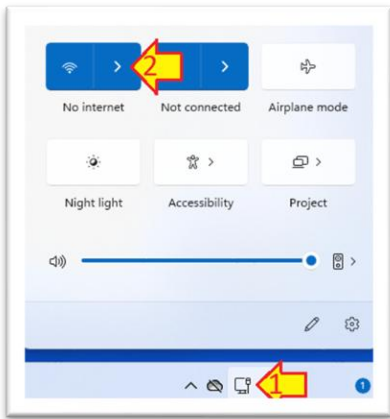
User Name: admin

lower case

password: password

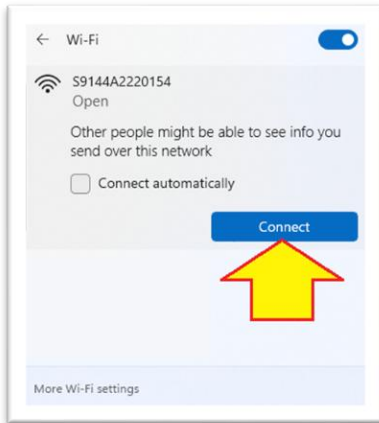
lower case

To connect the iG10 to your PC with Wi-Fi, on the PC system tray click on the network icon (1) then click on the Wi-Fi list button (2):



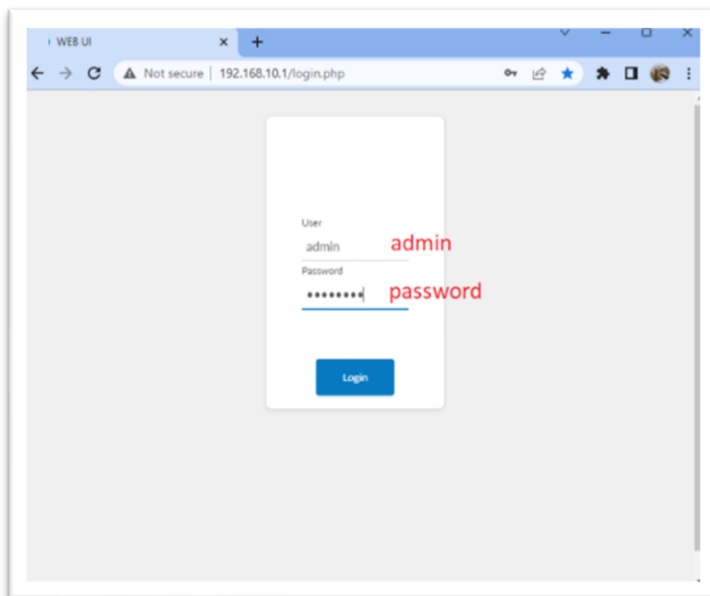
Click on the Network icon in the System Tray

Find the iG10 receiver:



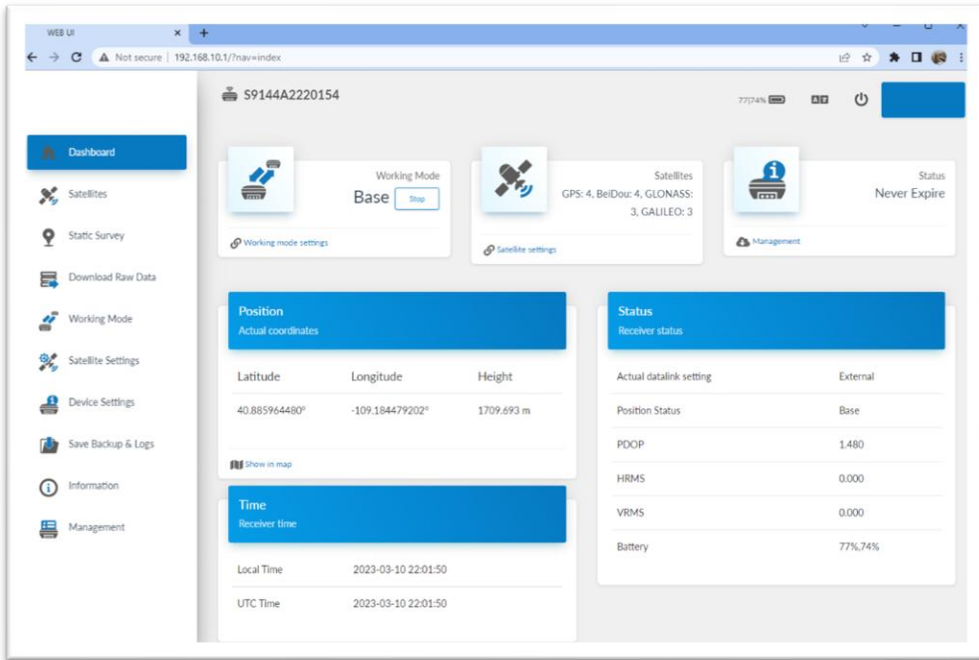
Click on **Connect**. Wait a moment for the connection to be completed. If a dialog noting there is no internet available from the connection, choose to 'stay connected'.

Open a browser window and browse to the IP address: 192.168.10.1:

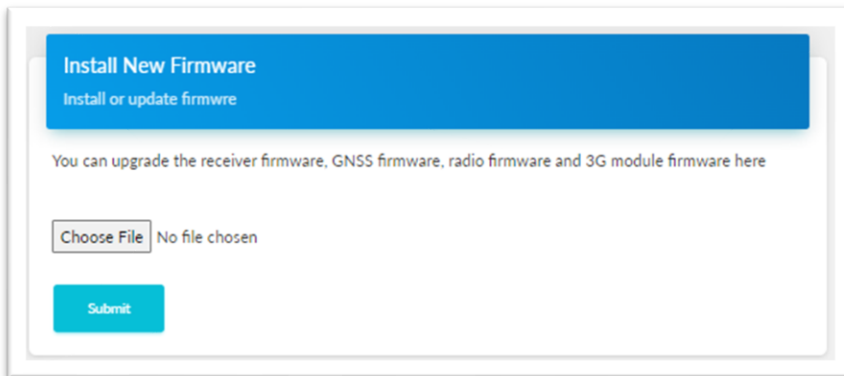


Enter 'admin' for the **User** and 'password' for the **Password**, then click **Login**

The main interface 'Dashboard' window will be shown:



Click on Management on the left panel.



Click on Choose File, browse to one of the three firmware files, select it and click Submit.

The Preferred order is:

Mainboard (a reboot and reconnect will required after update)

OEM

Radio

If the receiver reboots, it will be necessary to reconnect to it by Wi-Fi after the reboot.