

X-PAD Ultimate FAQ Series

FAQ: Disable Background Optimization

More FAQ's like this one are available here: [[X-PAD FAQ Series](#)]

Date: 9/11/2023

By: Mark Silver, mark@igage.com

Filename: FAQ_XPAD_BackgroundOptimization_003.docx

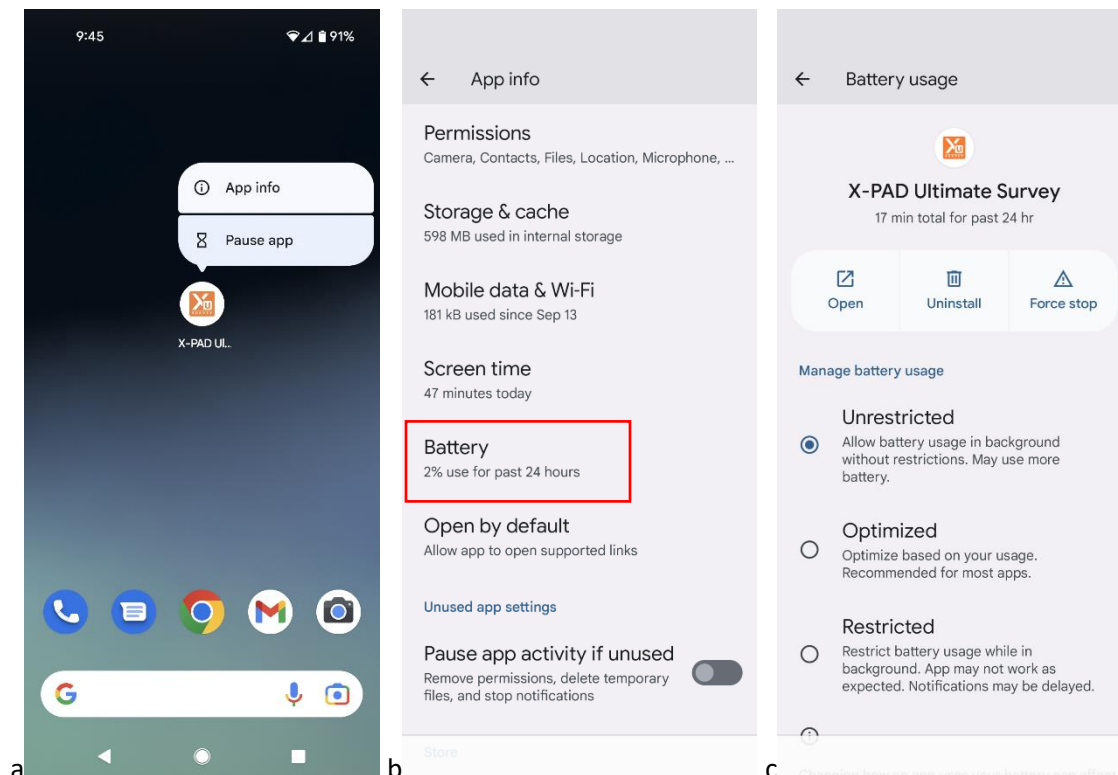
Thesis

X-PAD needs to be allowed unlimited device resources to run in the background so that it can continue to talk to the controlled instrument (GNSS, TPS) if you make a phone call or use another application.

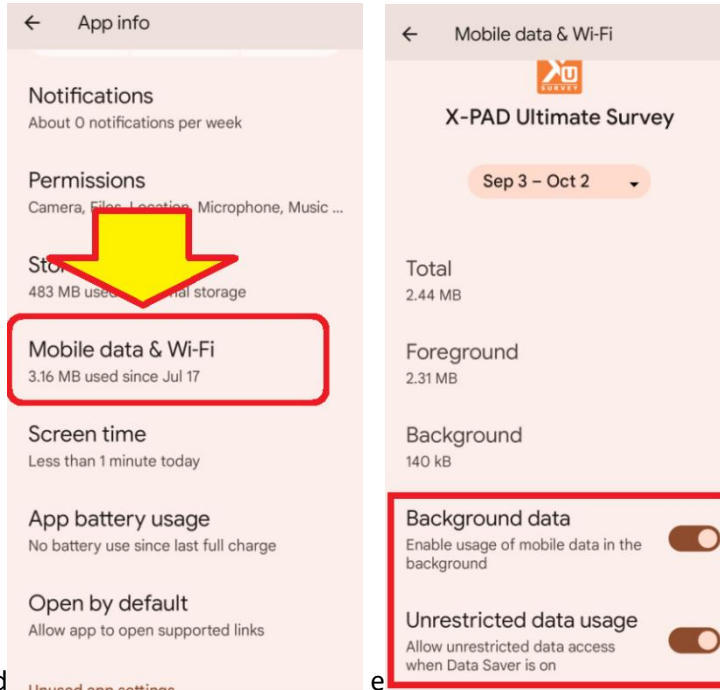
There are two sections to this document:

- One: Google Pixel Devices
- Two: Samsung Devices

Method One: Google Pixel Devices



- a. Click and hold on the X-PAD desktop icon, then click on the little (i) **App info**
- b. Click on the **Battery** setting
- c. Set **Manage battery usage** to **Unrestricted**

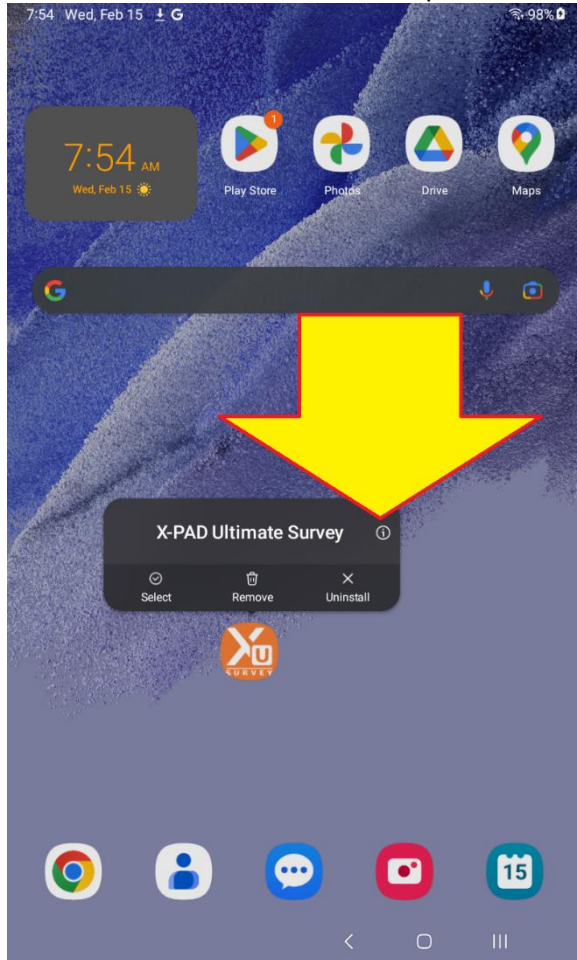


d: Click on **Mobile data & Wi-Fi**.

e: **Enable** both **Background data** and **Unrestricted data usage**.

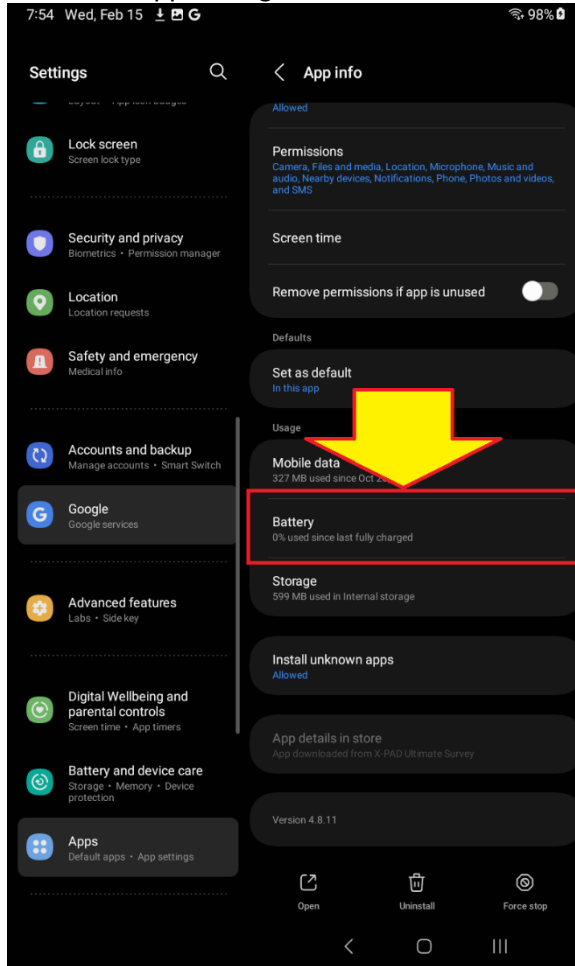
Method Two: Samsung Devices

1. Click and hold on the X-PAD desktop icon:



Then click on the little “i” in a circle.

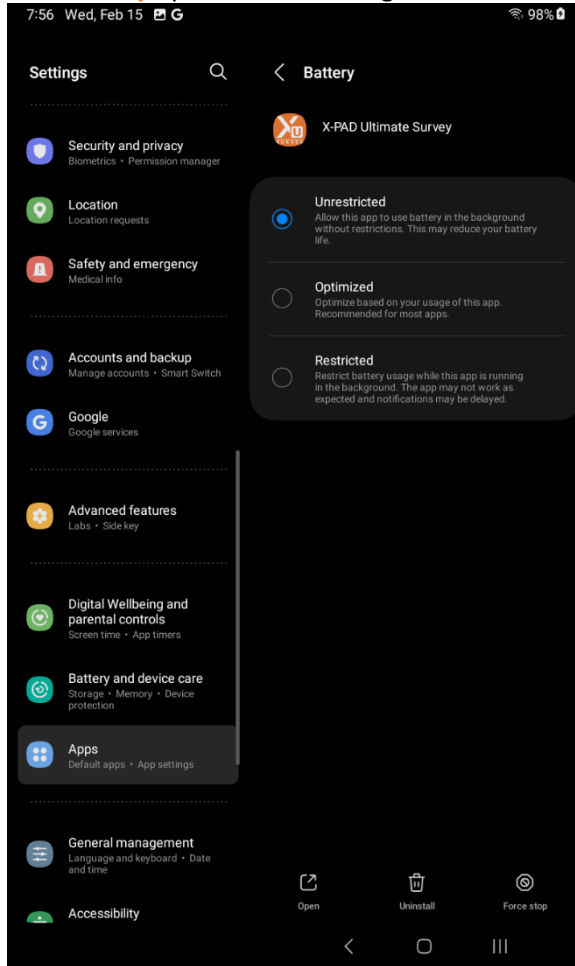
2. The X-PAD app settings are shown:



4

Click on the **Battery** item.

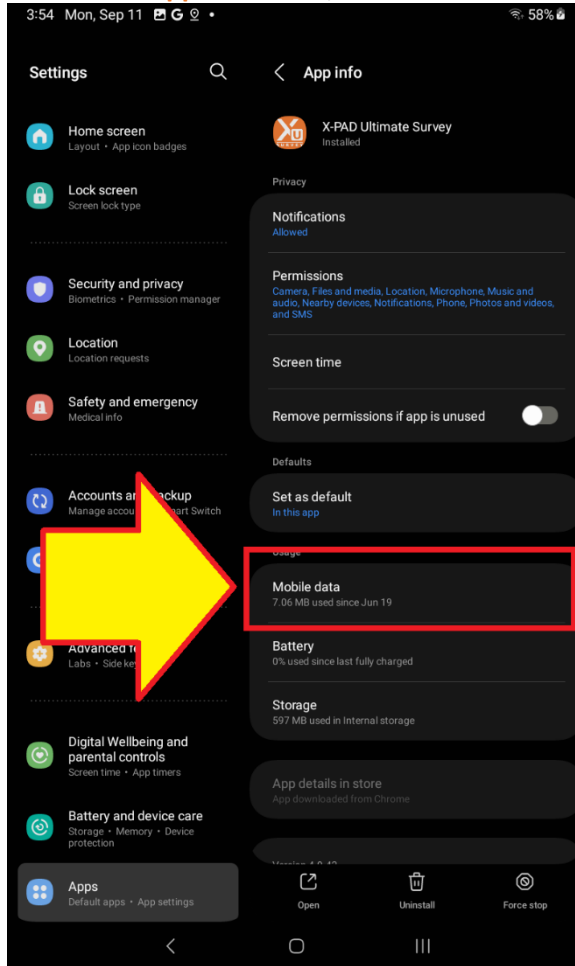
3. The **Battery** optimization settings will be shown:



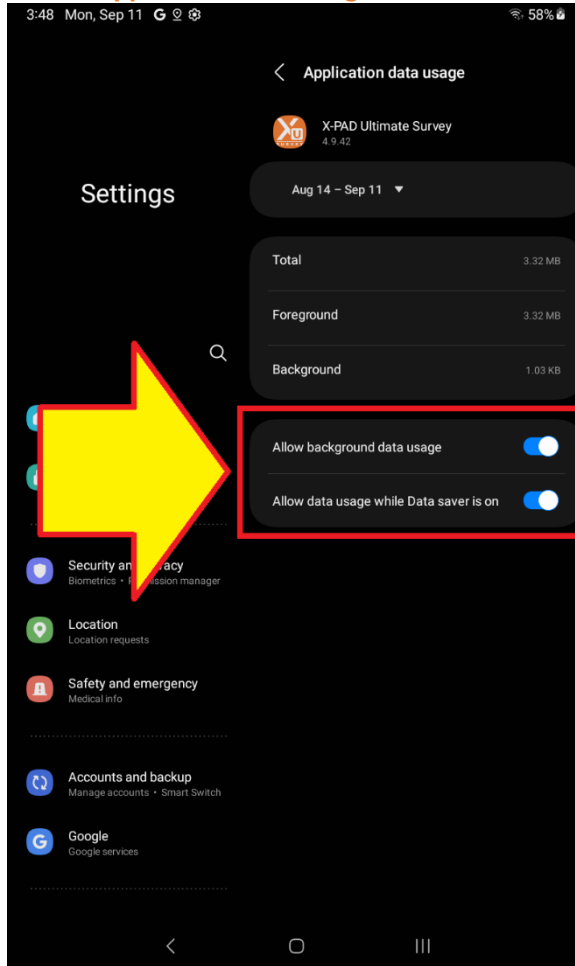
5

Select **Unrestricted**.

4. Back to the **App info** menu, click on **Mobile Data**:



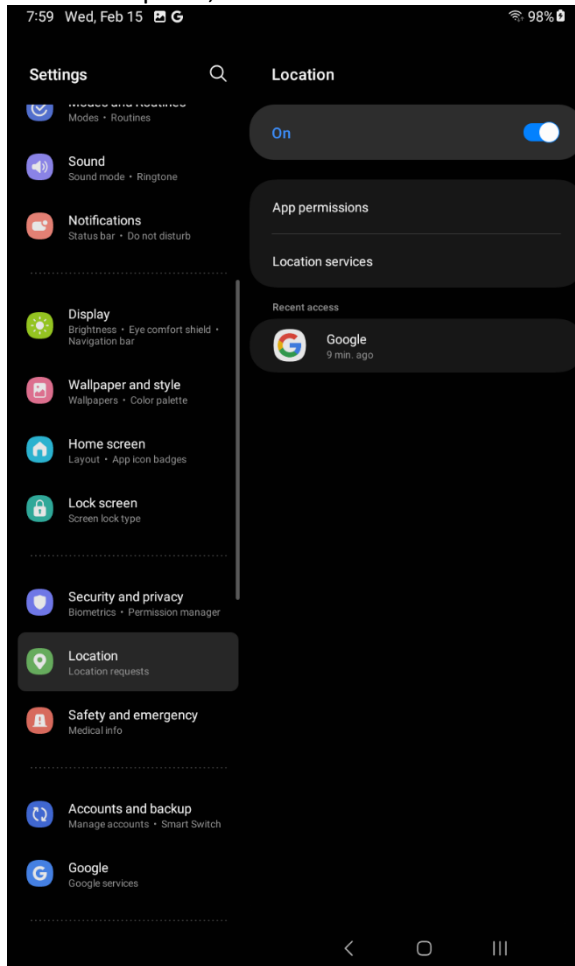
5. On the **Application data usage** menu:



7

Make sure that **Allow background data usage** and **Allow data usage while Data save is on** are both enabled.

6. On the left panel, click on 'Location':



Make sure **Location** is **ON**.
Click on **Location Services**.

7. Make sure that **Wi-Fi scanning** and **Bluetooth scanning** are enabled:

