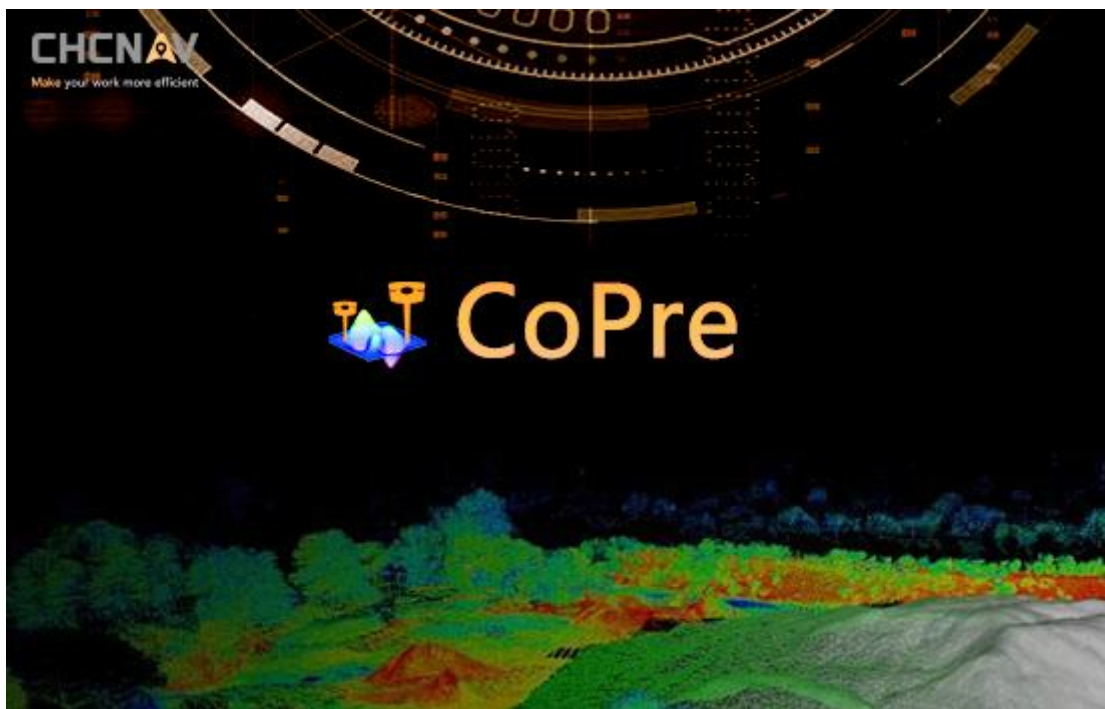




Operation Guide



M3D | Feb 2026

1. Upgrade Procedure

Check for updates: When a new version is available you will be notified at “About”.

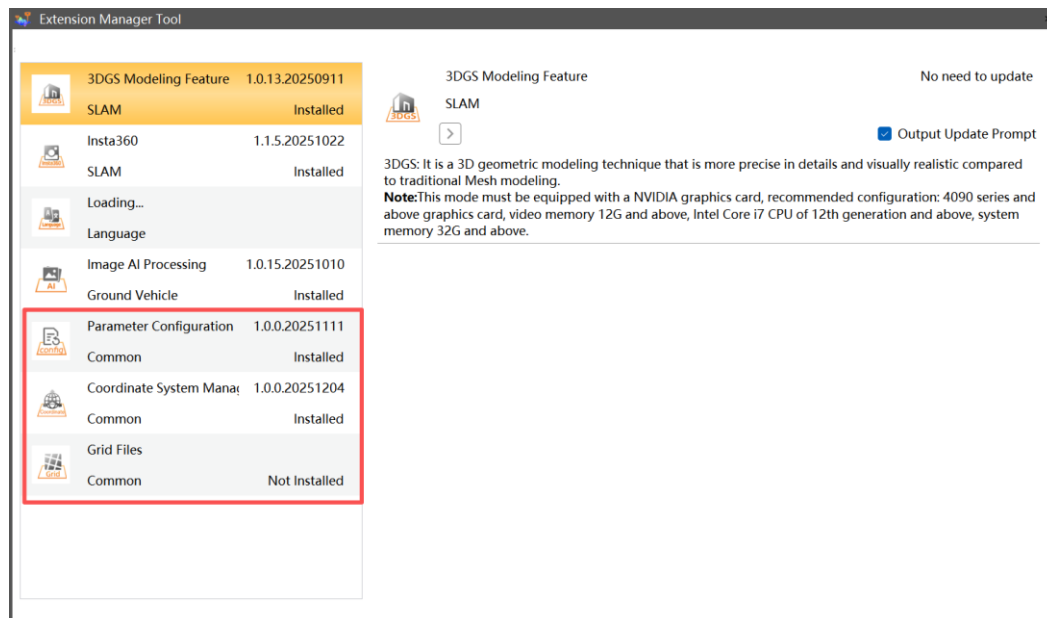
New users can download the latest version from:

<https://we.tl/t-RH1eK5odaC>

2. Update Notes

General:

1. Added parameter configuration, coordinate system management, and grid file download/update functions to the resource package downloader.

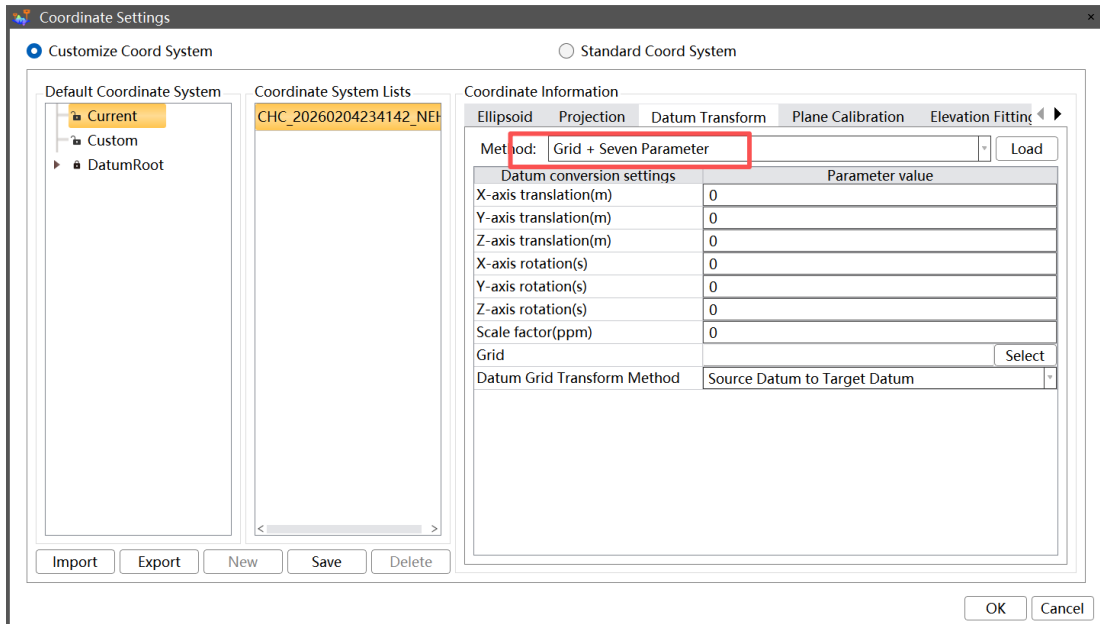


Parameter Configuration: Used to update configuration files utilized by the software;

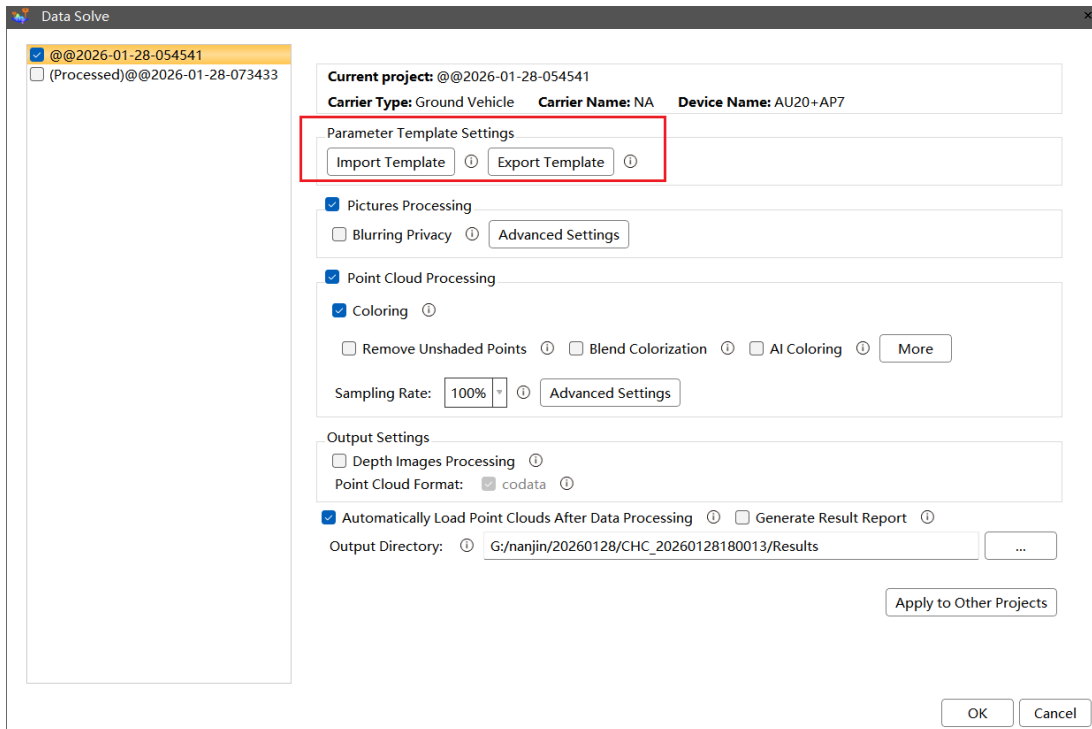
Coordinate System Management: Used to update coordinate library parameters and maintain the database of predefined coordinate systems;

Grid File Resource Package: Used to download grid files required by predefined coordinate systems;

2. Added a new “Grid + Seven-Parameter” option for datum transformation in coordinate system settings

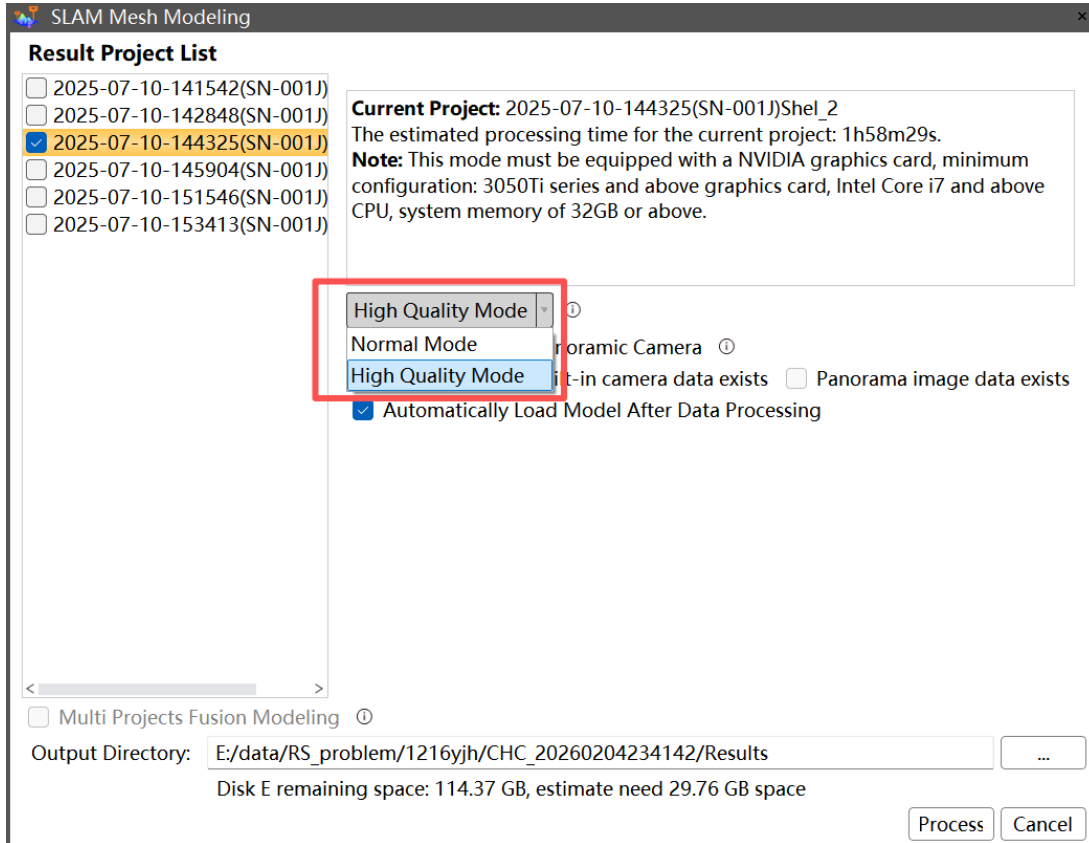


3. Added import and export of parameter templates in the data processing interface;

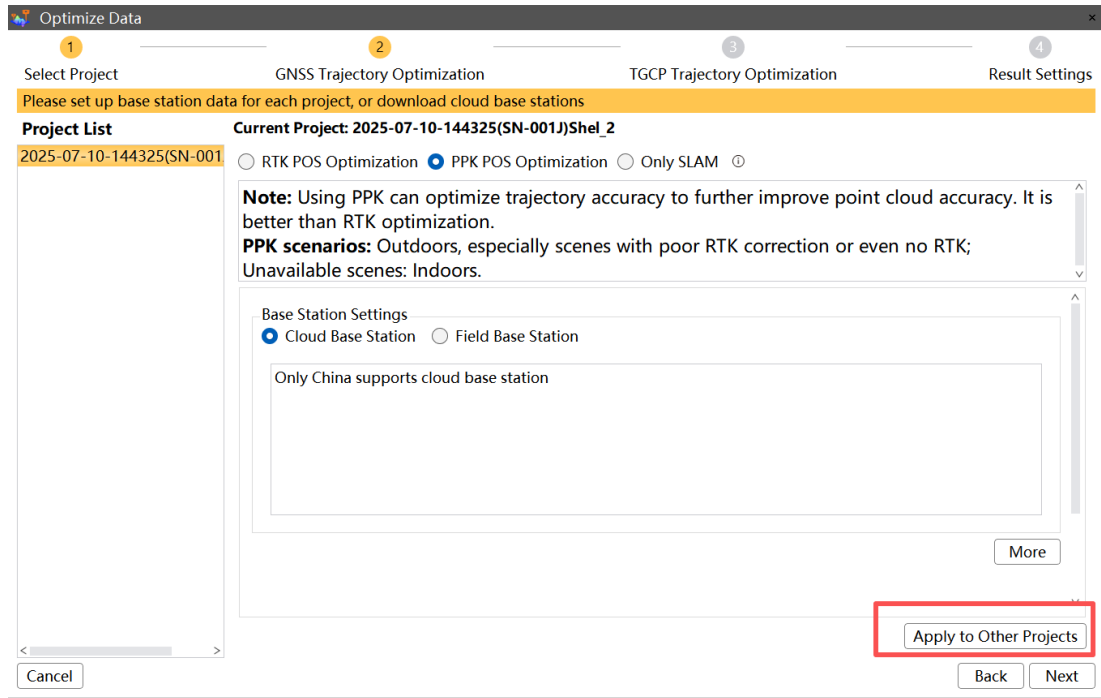


Slam:

1. Added a High-Quality Mesh reconstruction mode, providing more detailed models with longer processing time compared to the normal mode;

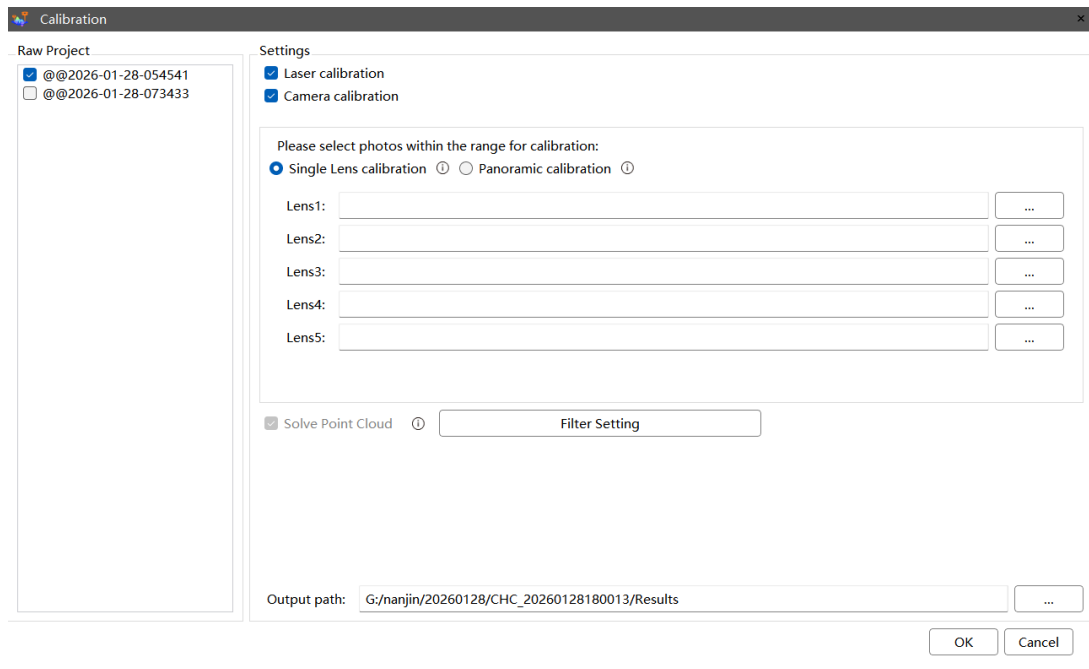


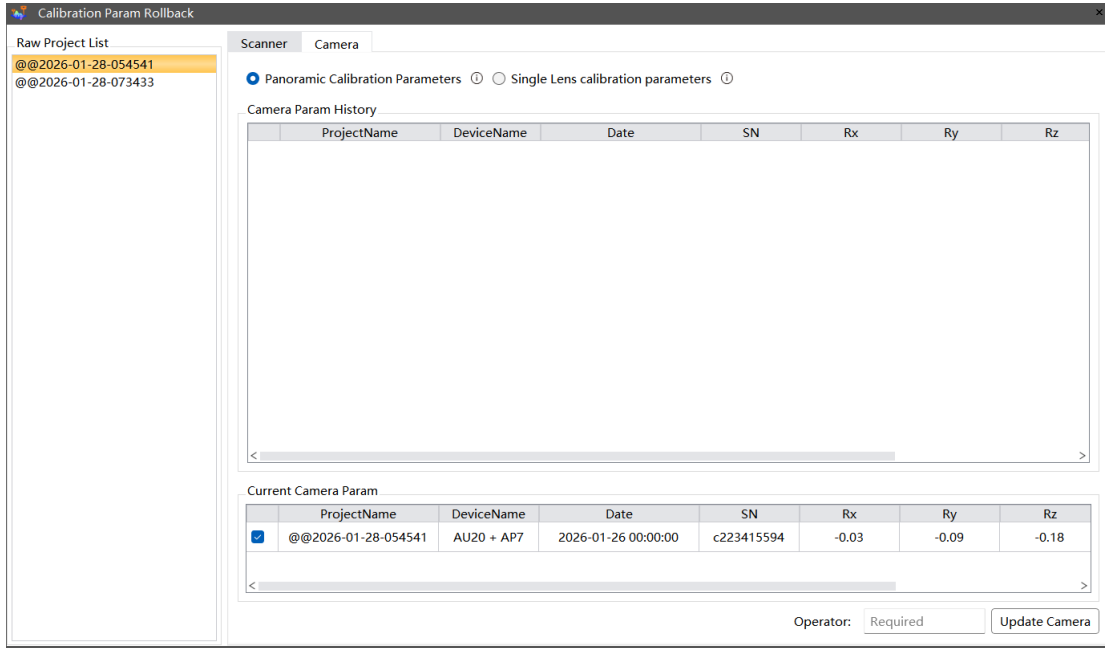
2. Supports batch setting of GNSS Trajectory Optimization



MMS:

1. Added AP7 laser automatic calibration and single-sensor automatic calibration features, supporting calibration parameter saving, device parameter updating, and parameter rollback.





CHC Navigation

Building C, NO. 577 Songying Road,

Qingpu District, 201703 Shanghai, China

Tel: +86 21 542 60 273 | Fax: +86 21 649 50 963

Email: sales@chcnv.com | support@chcnv.com

Skype: chc_support

Website: www.chcnv.com